

# GoldSun

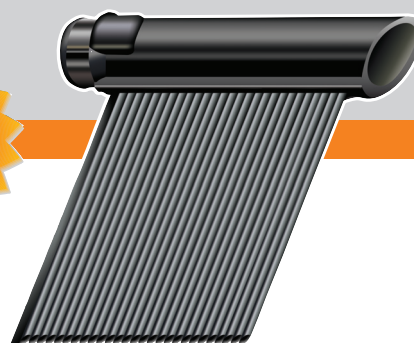
The green way for energy savings

## Advantages of the system

- Fast Return On Investment
- Environment friendly
- Easy & safe installation
- No maintenance
- Extremely high resistance

Model		408	410	412
Collector's size	feet	4'x8'	4'x10'	4'x12'
Collector's size	meter	1.24X2.44	1.24X3.05	1.24X3.66
Collector's width (Header length)	inch	48.8	48.8	48.8
Collector's width (Header length)	cm	123.95	123.95	123.95
Collector's weight (empty)	pound	16.9755	19.4006	22.7076
Collector's weight (empty)	kg	7.70	8.80	10.30
Water capacity	gallon	3.48	4.03	4.6
Full collector's weight	pound/feet	1.438	1.326	1.273
Full collector's weight	kg/mr	7.03	6.48	6.22
Recommended Water Flow rate	gallon/min	3.2	4	5
Maximum Operating Pressure	psi	40	40	40
Operating Temperature Range	centigrade	20 - 32	20 - 32	20 - 32
Heating Capacity	Btu/sq.foot/day	950	950	950
Heating Capacity	Btu/collector/day	30,400	38,000	45,600

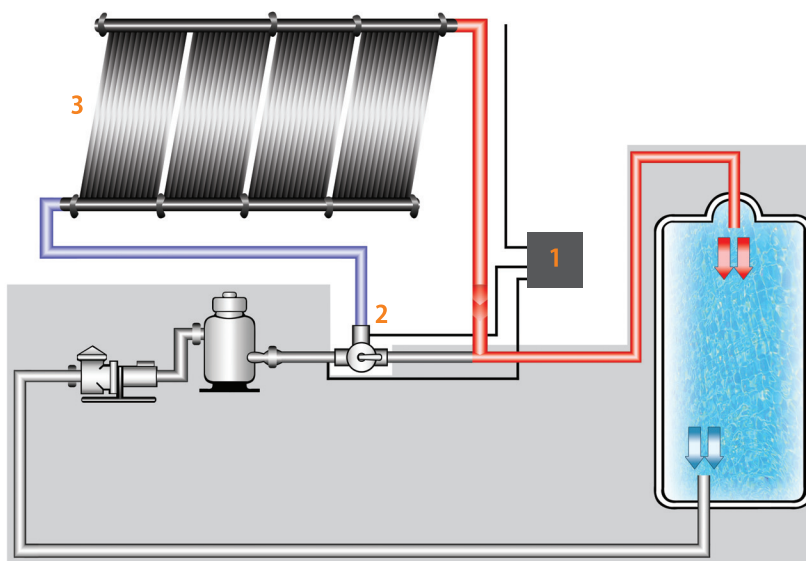
GreenTech Energy's collectors are made of top quality raw Copolymer Polypropylene blended with black carbon, synergistic antioxidants and UV stabilizers which are used to protect the base material for years and helps it to endure extreme climates conditions and UV radiation. The collectors are molded (not welded or joined) in order to prevent any leakages.



ISO 9001:2000 & 14001:2004

GreenTech Energy's system integrates with the existing pool filtering system and introduces three new components :

1. Controller and a set of sensors which operate the system only when the sun's energy is effective, and can heat the pool's water.
2. A tri directional, computer controlled valve, which directs the pool water to the collectors.
3. GoldSun's collectors which absorb the sun's energy and invert it to hot water.



**GreenTech Energy**  
Nature at its Best

Address: 1 Kol Dodi St. Modiin 71706 | Tel: +972-8-979-9790 | Fax: +972-153-8-979-9790 | Email: info@gte-systems.com  
www.gte-systems.com